

HARRIS TOY COMPANY

A Toledo's Attic
Slide Presentation

Introduction

We remember the Harris Toy Company, one of the most outstanding manufacturers of cast metal toys. Located in Toledo from its inception in 1887 to its purchase by Foster Jewell (later Standard Steel Tube Co.) in 1907, Harris Toys are still highly sought after by collectors and recognized for their quality and unique styles.



Frank Harris and his Toy Business



Frank Harris established the Harris Toy Company in 1887 at Grand and Michigan Central Road streets in the Auburndale District of Toledo. Harris also founded the Harris Metal Wheel Co., Harris Wagon Works, and Harris Metal Wheel and Tricycle Company.



TO THE TRADE

In presenting our catalogue, we have endeavored to bring to your notice our line of Steel Toys.

We have recently purchased the Manufacturing plant of The Harris Toy Co., together with their patterns, dies, and machinery. The majority of our toy output will be of the steel variety, the principal features of which are durability and superiority of finish. All goods to be sold direct and shipped from our factory.

Thanking our customers for favors extended in the past, and asking for a continuance of their patronage in the future, we are,

Very respectfully yours,

THE STANDARD STEEL TUBE CO.,

Toledo, Ohio, U. S. A.

The Harris Toy Company was sold to Standard Steel Tube Company in 1907 for \$25,000. Frank Harris stayed on as manager after the sale.

The former Harris Toy Factory building as it looks today



Harris Toys: Figures

"Foxy Grandpa" in wagon cart



Harris Toys: Figures

"Gloomy Gus"



Harris Toys: Figures

Harris Dog and Cow



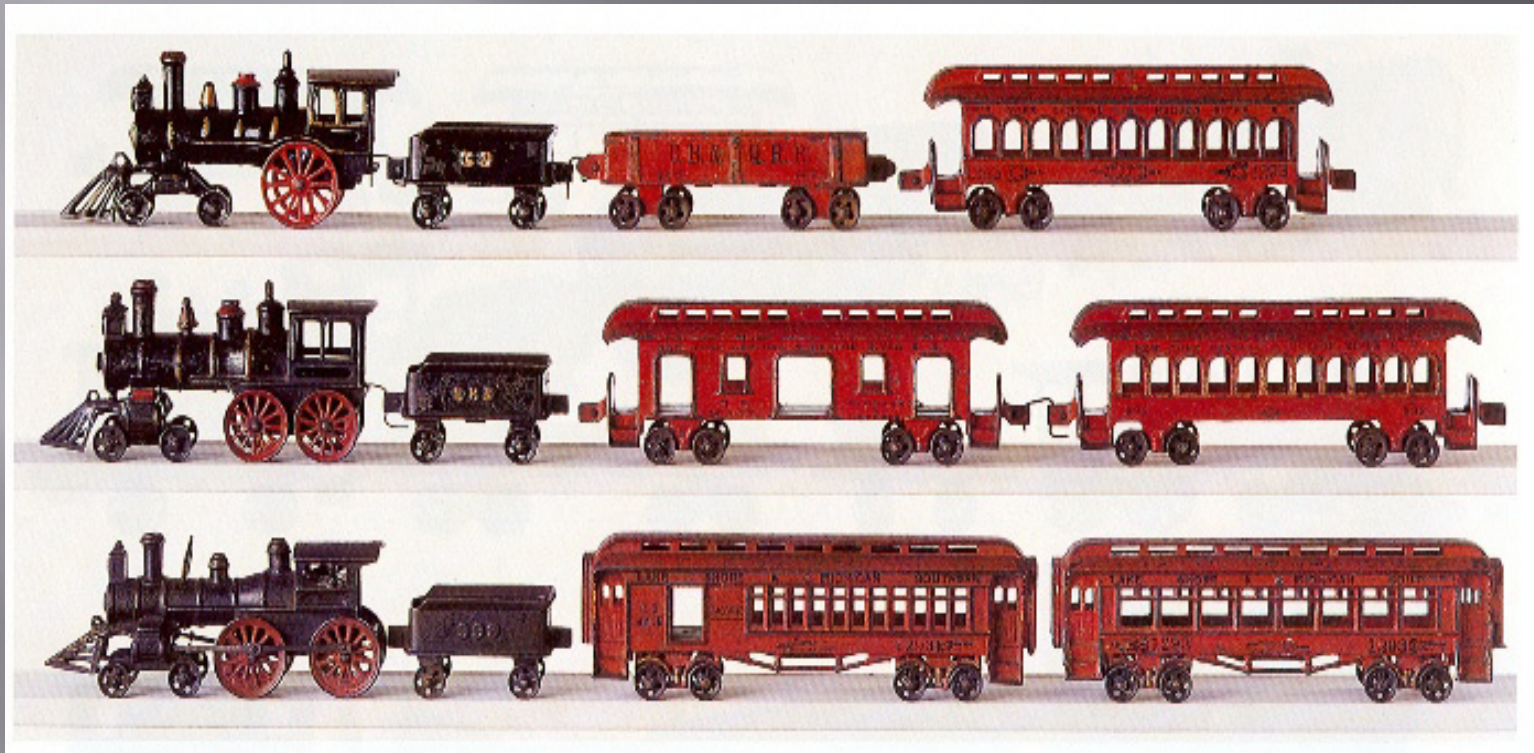
Harris Toys: Figures

Sheep



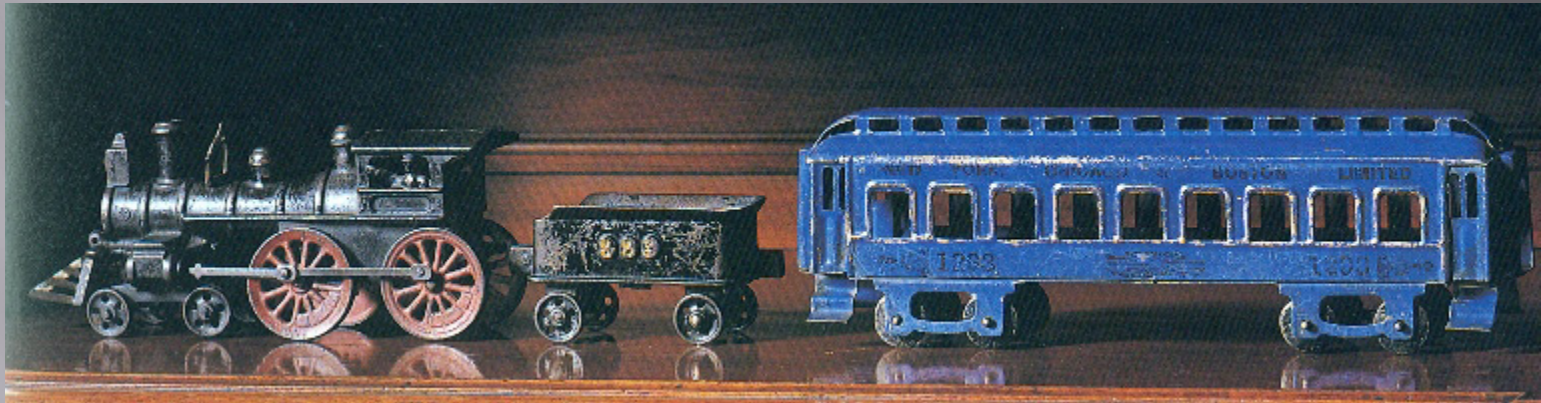
Harris Toys: Vehicles

Three train sets: original set, circa 1895 (top); 1895 and 1903 set (middle); and 1903 set (bottom)



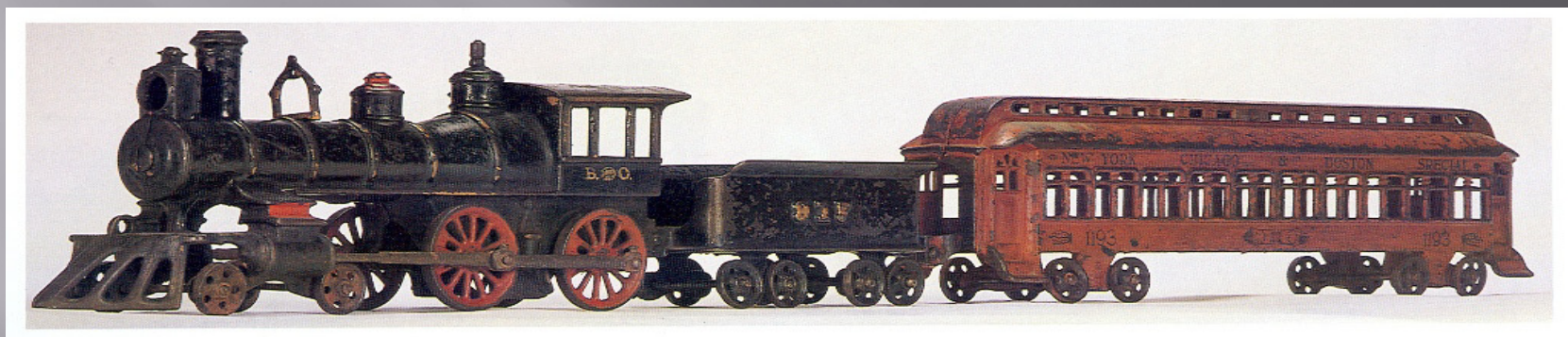
Harris Toys: Vehicles

1903 Harris Toy Company catalog cover



Harris Toys: Vehicles

B&O locomotive with 917 tender pulling New York
Chicago & Boston Special



Photos used by permission from Rick Ralston, publisher of [Cast Iron Floor Trains](#)

Harris Toys: Vehicles

Rare "Harris Hose Reel" Toy



Photo courtesy of Russ Harrington Antique Toys

Harris Toys: Vehicles

1903 Harris 7th Regiment Ambulance with illustration
from Harris Toy Catalog

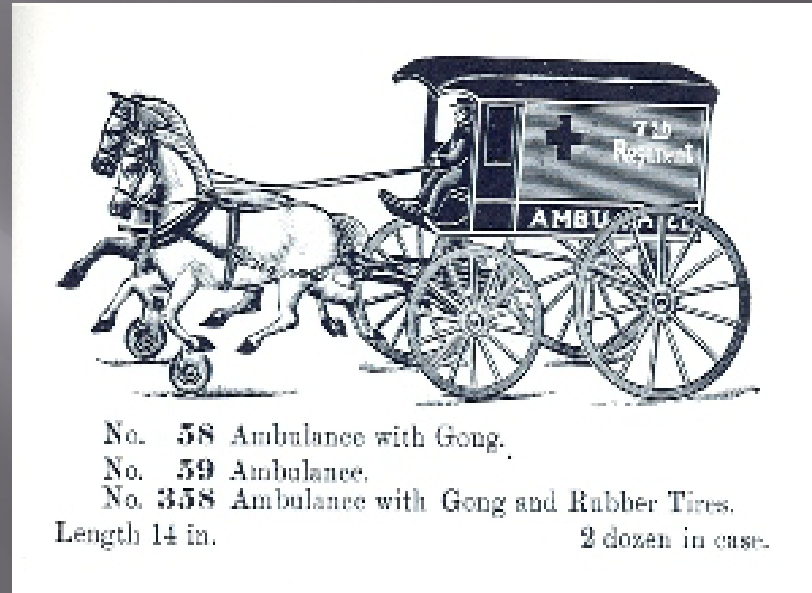


Photo courtesy of Russ Harrington Antique Toys

Harris Toys: Vehicles

1903 Harris Coal and Wood Wagon



Copyright 2005, Joel Jay Weissman

Harris Toys: Vehicles

1903 Mule Truck with "Gloomy Gus" Driver and catalog illustration

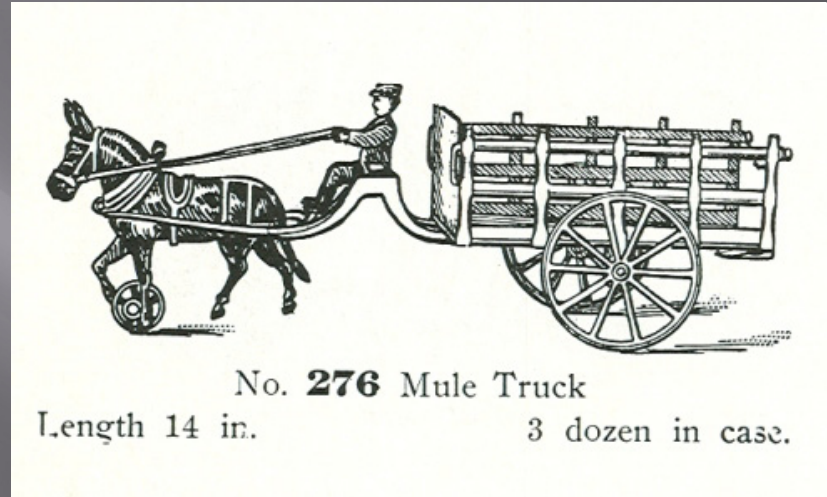


Photo courtesy of Bertoia Auctions