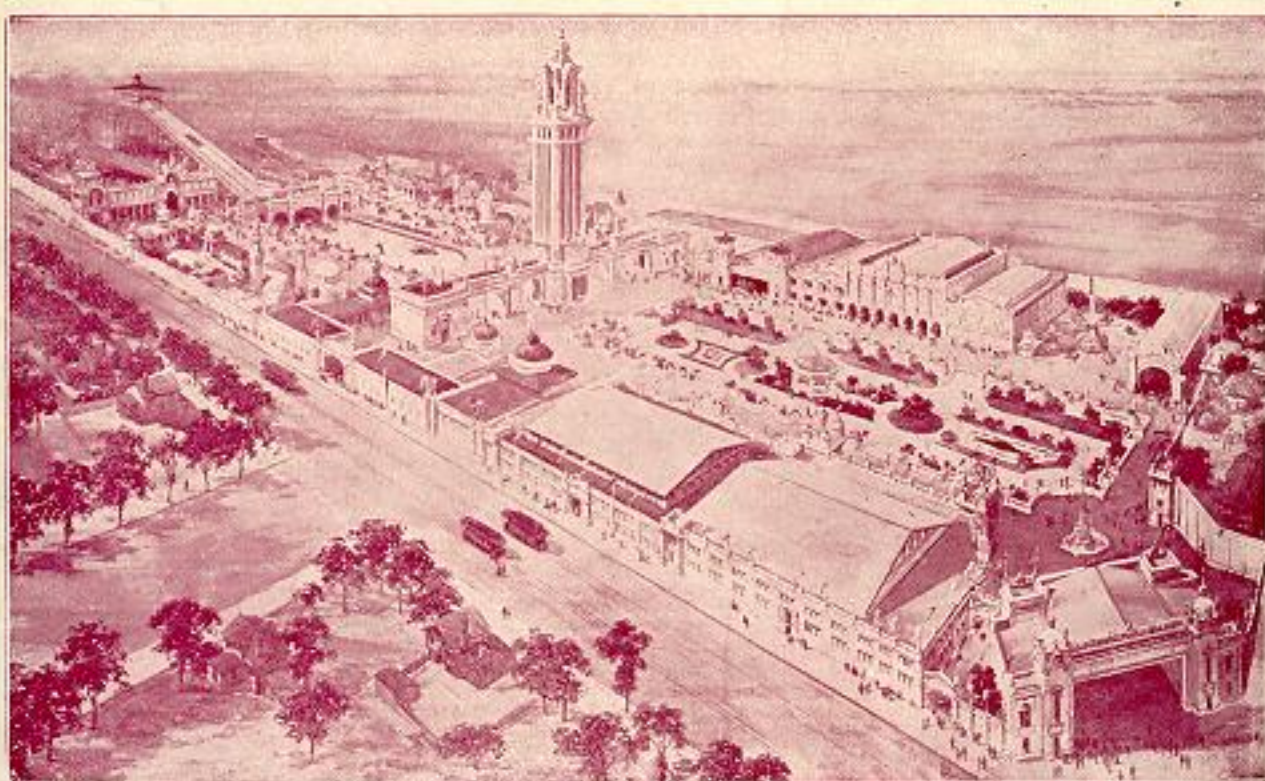


# MEET ME AT WHITE CITY

TOLEDO'S  
Greatest Amusement Resort.



Words and  
Music by

5  
**W. H. WOODWARD.**

Arranged by  
**W. G. WOODWARD, JR.**

Published by  
THE  
**WOODWARD MUSIC CO.**  
TOLEDO, O.

and Orchestra,  
mandolin & Guitar.

BOSTON.  
OLIVER DITSON  
CHICAGO — CINCINNATI  
LYON & HEALY — JOHN

# Meet Me At White City.

Words & Music by  
W. H. WOODWARD.

*Allegro moderato.*

The piano introduction consists of two staves in 3/4 time, marked *Allegro moderato*. The key signature has one flat (B-flat). The music features a steady bass line in the left hand and chords in the right hand, with a repeat sign at the end of the first four measures.

First system of vocal and piano accompaniment. The vocal line begins with a rest, followed by the lyrics: "Have you been out to White / Go out and vis - it White". The piano accompaniment continues with chords and a melodic line in the right hand.

Second system of vocal and piano accompaniment. The vocal line continues with the lyrics: "Cit - y, If not go there to - day, / Cit - y, You'll have a jol - ly time,". The piano accompaniment provides harmonic support with chords and a melodic line.

Third system of vocal and piano accompaniment. The vocal line concludes with the lyrics: "Lights bright - ly shine al - ways day time / Come go with me peo - ple you'll see". The piano accompaniment continues with chords and a melodic line.

Night just as bright as day,  
From eve - ry for - eign clime,  
Go take with  
Japs Turks and

you sweet heart Nel - lie, To have some pleas - ures  
al - so the Rus - sians, The Chin - ese blithe and

real, \_\_\_\_\_ Dan - cing and bath - ing, yes swing - ing and  
gay, \_\_\_\_\_ Sights you will see, if you'll just come with

skat - ing, Then ride on the Old Fer - ris Wheel.  
me Nell, And vis - it White Ci - ty to - day.